

# Creating school safety through Geo-spatial technology

Dr. Mukta Girdhar  
Prof Mewar University  
Director  
Disaster Resilient & Research Foundation

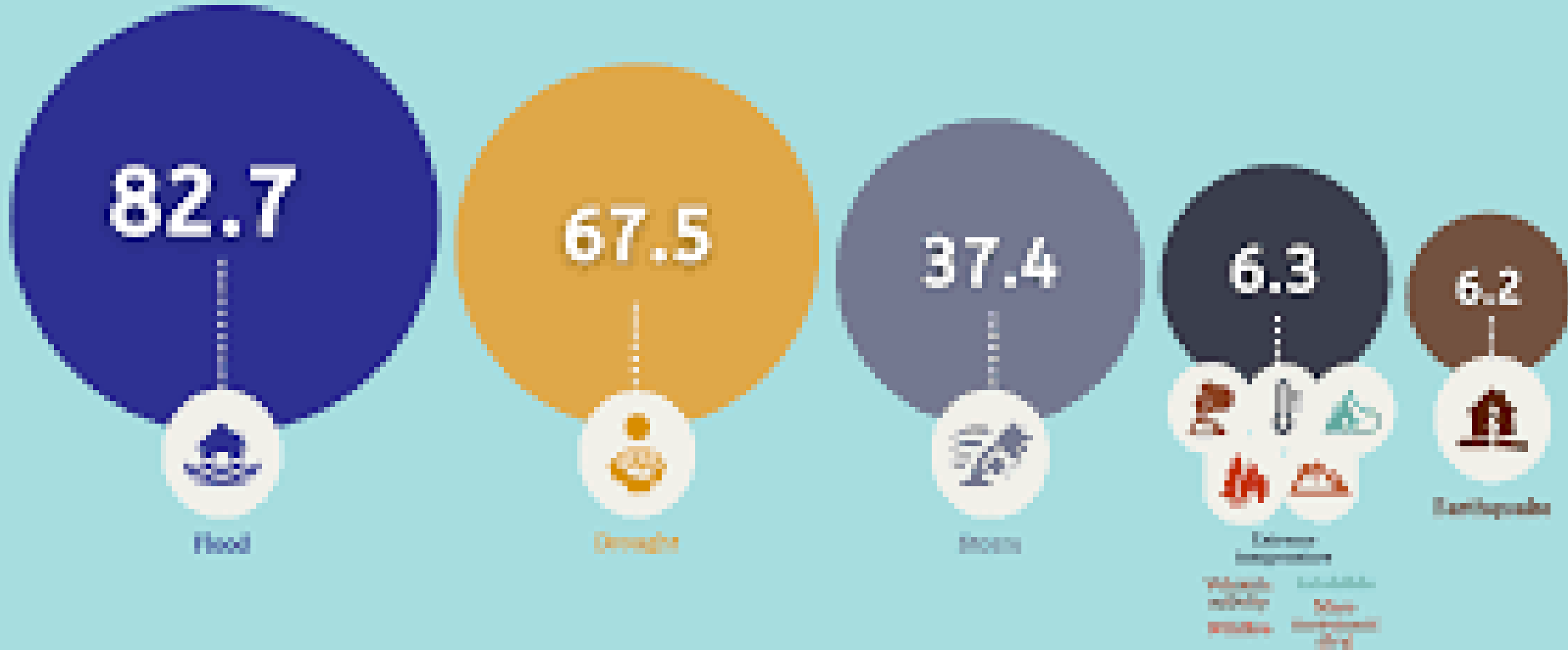


# Student affected by Disasters





# Annual average number of (millions) affected by disaster type (2001 - 2020)



Source: UNDRR (2021)

## HOLISTIC APPROACH TO ENSURE CHILDREN'S SAFETY IN SCHOOL



# Safe School: Safe Students



School Safety Plan:  
Individual Safety &  
Disaster  
Preparedness

Emergency Drills

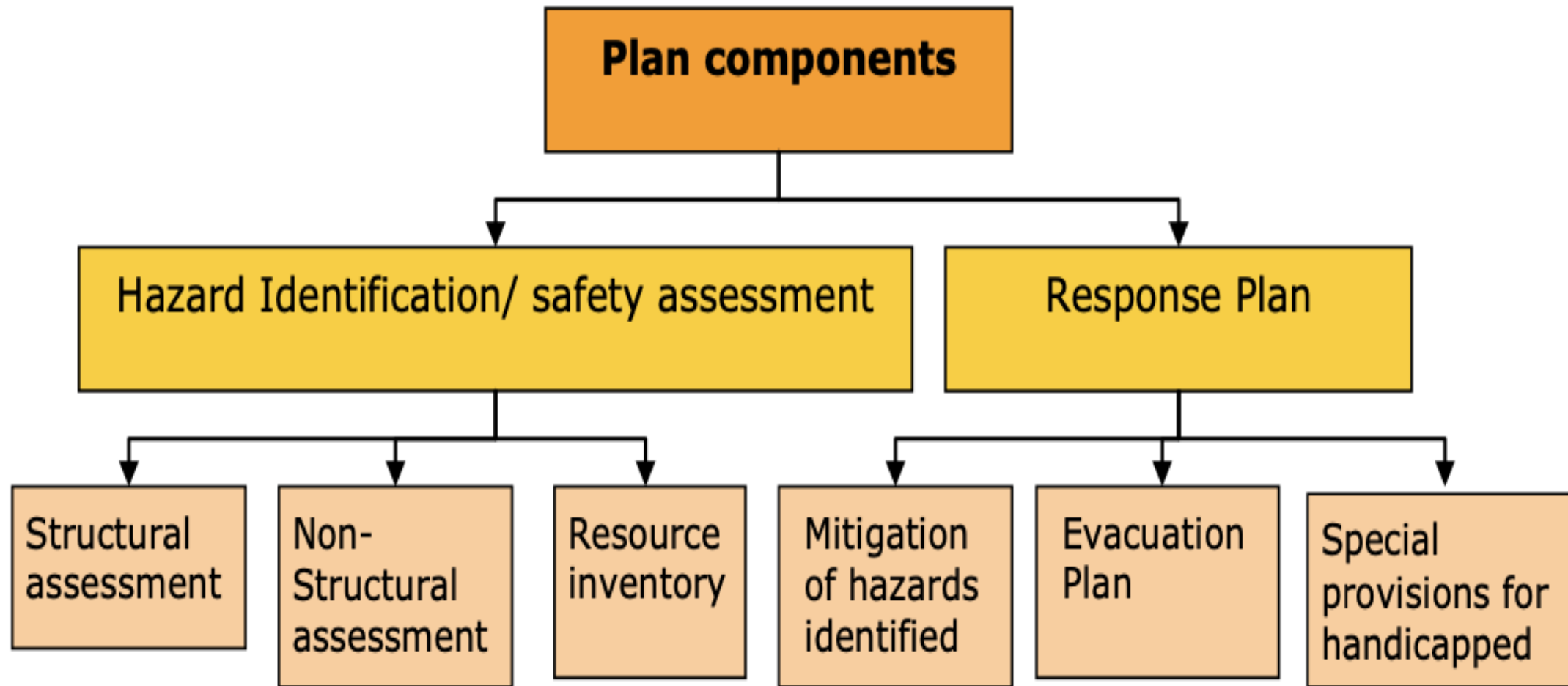
Entry/Exit  
Protocols, CCTV  
surveillance

Self-Defence  
Training to students

Empowerment of  
PTA to audit safety  
measures

Access Control of  
different areas &  
Staff Counselling

Good/Bad Touch  
Training & feedback  
mechanism for  
students



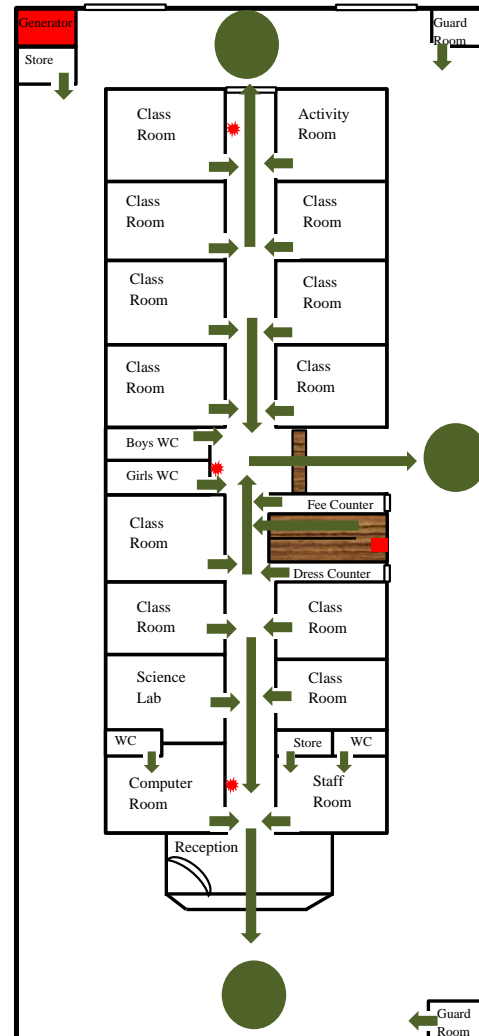
# Geospatial School safety Disaster Management Plan



The physical location and demographic details of the school building and its surrounding environment

# Evacuation Plan

**Emergency Evacuation Plan  
Kamal International School  
11/14 Nangli Sakrawati, Najafgarh, Delhi 43  
Ground Floor**

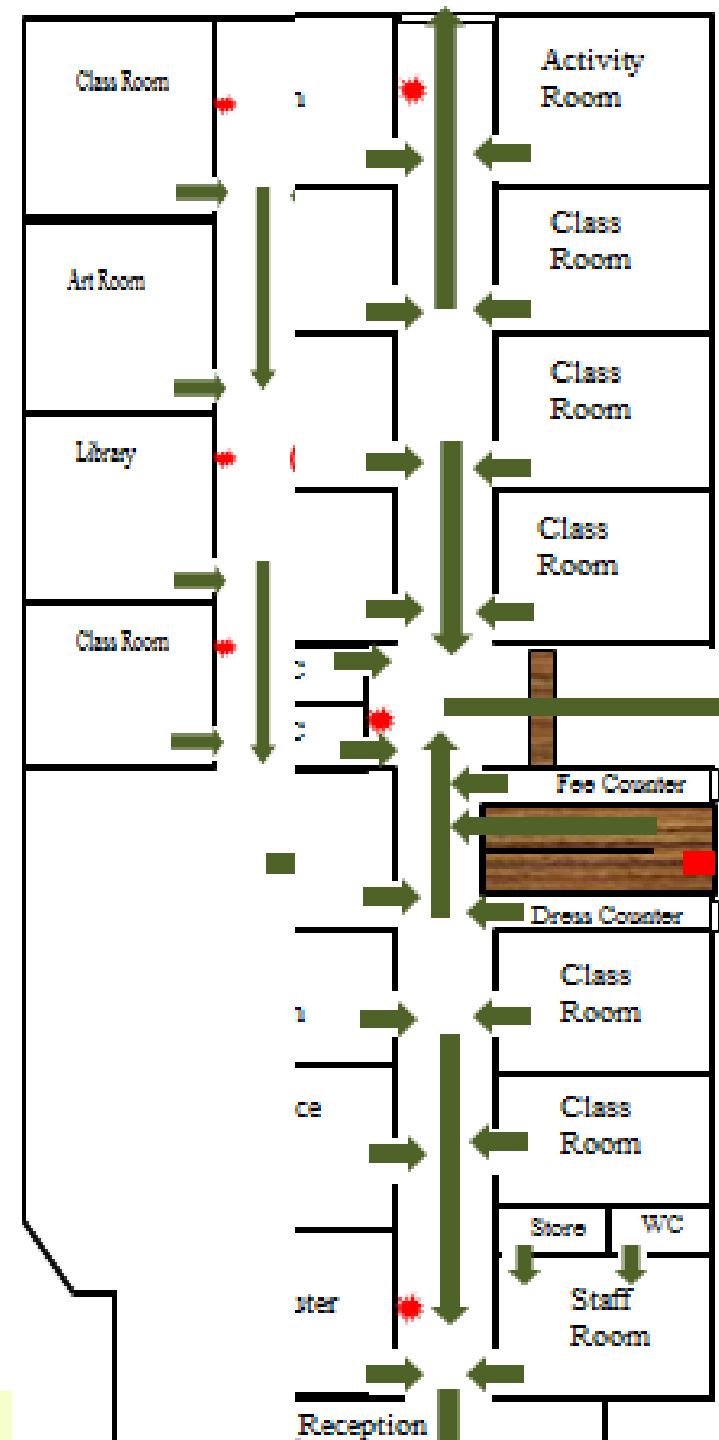


- Fire Extinguisher
- Hose reel
- Sand Bucket
- Evacuation Direction
- Vulnerable Areas
- Assembly Point
- Drinking Water
- Meter Gauge
- Hand Wash

Najafgarh Police Station  
Ph-011 25016200  
Control Room-100  
Delhi Police Women 1091  
Traffic Police 1095/011-25844444  
Fire Station Najafgarh  
Ph: -011 28012214  
Anand Hospital  
Ph: - 09899226009  
Ambulance 102,108,  
DDMA 1077

Do not panic  
Protect yourself  
Do not run  
Walk briskly



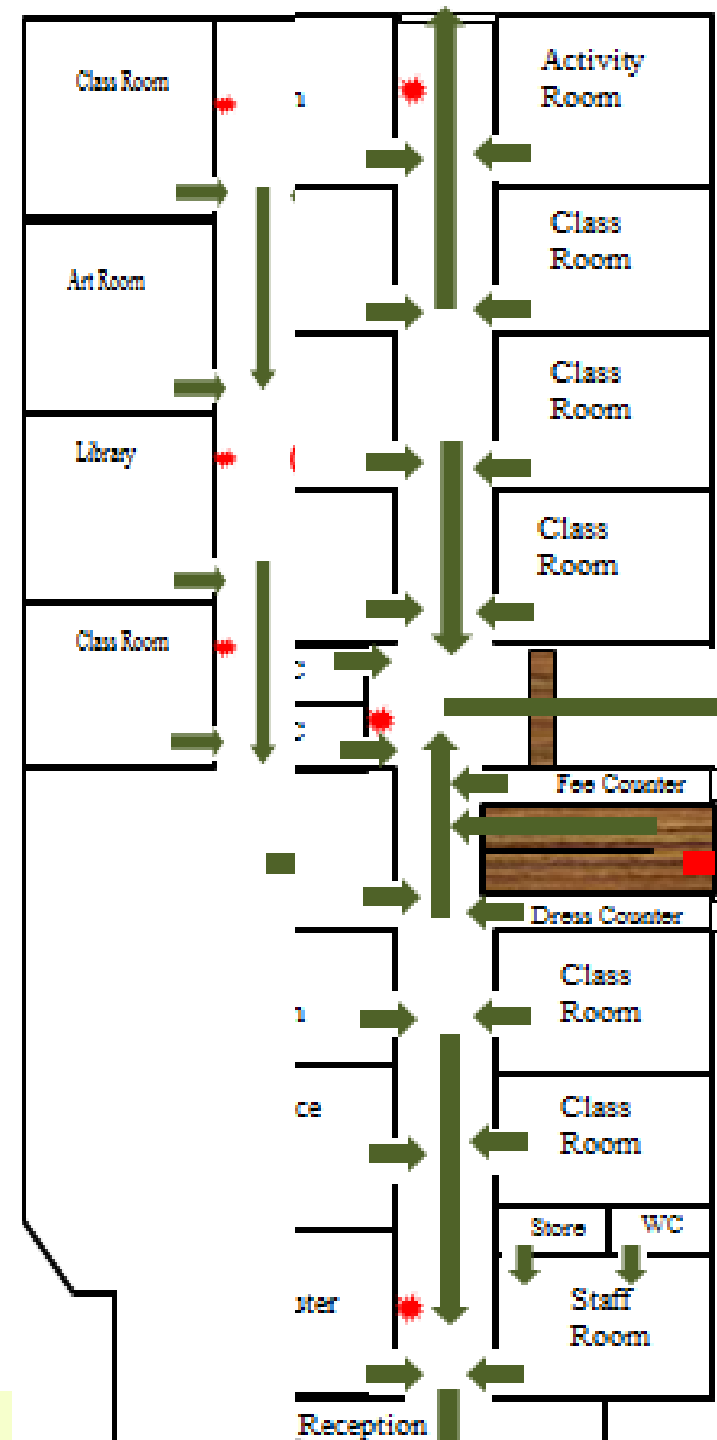


# Emergency Evacuation Plan Kamal International School 11/14 Nangli Sakrawati, Najafgarh, Delhi 43

Fire Extinguisher Hose reel  
Sand Bucket Evacuation Direction Vulnerable Areas Assembly Point Drinking Water Meter Gauge  
Hand Wash

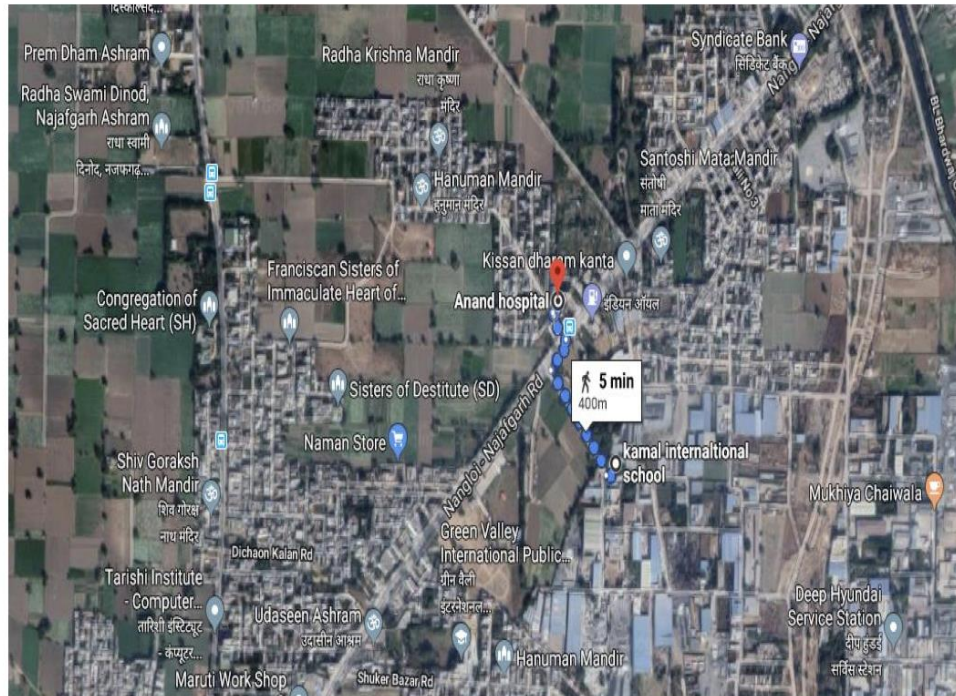
Najafgarh Police Station  
Ph-011 25016200  
Control Room-100  
Delhi Police Women 1091 Traffic Police 1095/011-25844444 Fire Station Najafgarh  
Ph: -011 28012214 Anand Hospital  
Ph: - 09899226009 Ambulance 102,108,  
DDMA 1077

DO'S AND DONT'S Do not panic Protect yourself Do not run  
Walk briskly



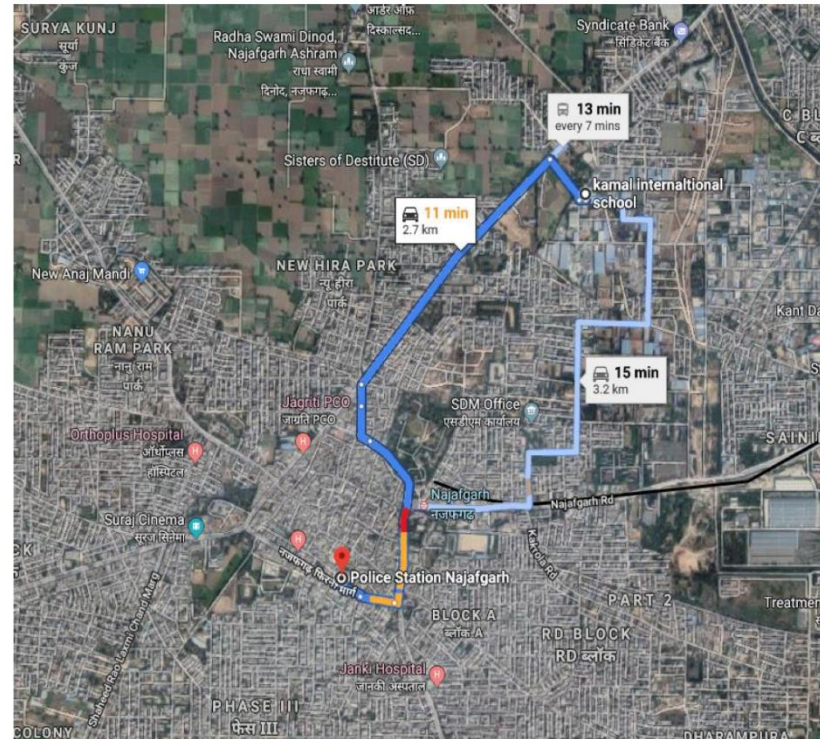
Nearest Fire station  
Nearest Police station  
Nearest Hospitals

### Nearest Hospital



#### Anand Hospital

Nirmal Vihar, Dichaon Kalan,  
Delhi 110043  
Phone number- 011 28012214



#### Police Station Najafgarh

Najafgarh Thana Rd, Najafgarh,  
Delhi 110043  
Phone number- 011 25016200

# Emergency/ Help line Number



- DDMA-1077
- Delhi Fire Services -101
- Delhi Police-100
- Delhi Police-1091(Women)
- Senior Citizen-1291
- Missing Person-1094
- Traffic Police-1095/011-25844444
- Ambulance-102,108
- Eyes &Ears-1090

**Stretcher Yes Fire extinguisher 05**  
**Ladders Yes Thick rope**  
**Torch Yes First-aid box**  
**Temporary shelter (tents and**  
**tarpaulins)**



# Formation of Team

- Awareness generation Team
- Warning & information dissemination team
- Evacuation Team
- Search & Rescue Team
- Fire Safety Team
- First aid Team
- Site security team
- Bus safety team
- On call emergency team



## Disaster Management Committee

Chairperson: Principal	A.R. Gupta/Niva Deo (9999097247)
Education Officer	Bimal Kumar, Dy. Director of Education Zone 22 South West (011 25324422)
Parent Teacher Association President	Mr.Magan Singh Bhandari (9910070983)
4 Student (NSS, NSC, SCOUTS, Guide)	Anshul, Tanvi, Ashish, Harsh Kumar
Representative of Relief/ Revenue/ Disaster Management Department/District Administration, Municipal Corporation	Neera, MCD Education officer (011 28018775)
Representative of Fire Services	Najafgarh Fire Station (011 28012214)
Representative of Police	Najafgarh Police Station (011 25016200)
Representative of Health Department	Anand Hospital, Nirmal Vihar, Najafgarh (09899226009)
Warden from Civil Defence	N/A



**Dr. MUKTA GIRDHAR**  
Founder & Director

---

**Disaster Resilient  
& Research Foundation  
New Delhi**

✉ mukta.girdhar@drrf.org.in

☎ +91 98188 51737

➤ [WWW.DRRF.ORG.IN](http://WWW.DRRF.ORG.IN)

**Thanks**